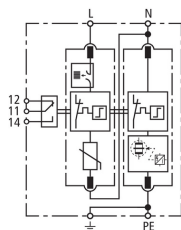


NEW DG M TT 2P ACI 275 FM (952 121)

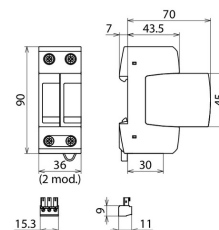
- ACI switch /spark gap combination integrated in the protection module
- Prewired complete unit consisting of a base part and plug-in protection modules
- High reliability due to "Thermo Dynamic Control" SPD monitoring device and ACI technology



Figure without obligation



Basic circuit diagram DG M TT 2P ACI 275 FM



Dimension drawing DG M TT 2P ACI 275 FM

Modular surge arrester with Advanced Circuit Interruption (ACI) for single-phase 230 V TT and TN systems (1+1 configuration).

Type	DG M TT 2P ACI 275 FM
Part No.	952 121
SPD according to EN 61643-11 / IEC 61643-11	type 2 / class II
Energy coordination with terminal equipment (≤ 10 m)	type 2 + type 3
Nominal a.c. voltage (U_N)	230 V (50 / 60 Hz)
Max. continuous operating voltage (a.c.) [L-N] (U_C)	275 V (50 / 60 Hz)
Max. continuous operating voltage (a.c.) [N-PE] (U_C)	255 V (50 / 60 Hz)
Nominal discharge current (8/20 μ s) [L-N] (I_n)	20 kA
Nominal discharge current (8/20 μ s) [N-PE] (I_n)	80 kA
Voltage protection level [L-N] / [N-PE] (U_p)	≤ 1.5 / ≤ 1.5 kV
Voltage protection level [L-N] / [N-PE] at 5 kA (U_p)	≤ 1.5 / ≤ 1.5 kV
Response time [L-N] (t_A)	≤ 100 ns
Response time [N-PE] (t_A)	≤ 100 ns
Additional external fuse	not required
Short-circuit withstand capability (I_{SCCR})	25 kA _{rms}
Temporary overvoltage (TOV) [L-N] (U_T) – Characteristic	440 V / 120 min. – withstand
Temporary overvoltage (TOV) [N-PE] (U_T) – Characteristic	1200 V / 200 ms – withstand
Operating temperature range (T_U)	-40 °C ... +80 °C
Operating state / fault indication	green / red
Number of ports	1
Cross-sectional area (min.)	1.5 mm ² solid / flexible
Cross-sectional area (max.)	35 mm ² stranded / 25 mm ² flexible
For mounting on	35 mm DIN rails acc. to EN 60715
Enclosure material	thermoplastic, red, UL 94 V-0
Place of installation	indoor installation
Degree of protection	IP 20
Capacity	2 module(s), DIN 43880
Type of remote signalling contact	changeover contact
Switching capacity (a.c.)	250 V / 0.5 A
Switching capacity (d.c.)	250 V / 0.1 A; 125 V / 0.2 A; 75 V / 0.5 A
Cross-sectional area for remote signalling terminals	max. 1.5 mm ² solid / flexible
Weight	250 g
Customs tariff number (Comb. Nomenclature EU)	85363030
GTIN	4013364376663
PU	1 pc(s)

We reserve the right to introduce changes in performance, configuration and technology, dimensions, weights and materials in the course of technical progress. The figures are shown without obligation.