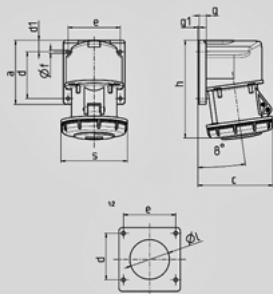


Panel mounted receptacle - Part no. 3641


- screw terminals
- frame terminals
- angled 80°
- partially assembled

Technical information

Ampere	63 A
Voltage	400V
Earth position	6 h
Hertz	50-60 Hz
Connection technology	Screw terminals
Contact	standard
Protection type	IP 67



Drawing	Amp.	63
1 MB 561	Poles	5
Dim. in mm	a	110
	b	106
	c	129
	d	80
	d1	20
	e	90
	f	5.5
	g	12
	g1	2
	h	168
	l	68
	s	118