

Cepex inbouwcontactdoos met beschermingscontact

Bestelnr. 4902

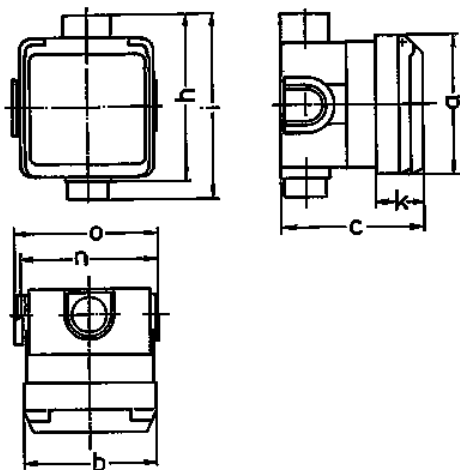


- Frans/Belgische norm
- schroefklemmen
- met inbouwdoos
- Slagvast volgens DIN 18032

Technische informatie

| | |
|----------------------|----------|
| Ampère | 16 A |
| Polen | 2 p+A |
| Voltage | 230 V |
| Hertz | 50-60 Hz |
| Beschermingsgraad | IP 44 |
| Aanrakingsveiligheid | true |
| Gewicht | 230 g |
| Certificeringen | EAC |

Tekeningen



| Tekening 1 MB 336 | Amp. Polen | 16 | | | 32 | | |
|--|---------------|-----|-----|-----|-----|-----|-----|
| | | 3 | 4 | 5 | 3 | 4 | 5 |
| Maten in mm | a | 93 | 93 | 93 | 93 | 93 | 93 |
| | b | 90 | 90 | 90 | 90 | 90 | 90 |
| | c | 95 | 95 | 95 | 95 | 95 | 95 |
| | h | 111 | 111 | 111 | 111 | 111 | 111 |
| | i | 124 | 124 | 124 | 124 | 124 | 124 |
| | k | 33 | 33 | 33 | 33 | 33 | 33 |
| | n | 91 | 91 | 91 | 91 | 91 | 91 |
| | o | 95 | 95 | 95 | 95 | 95 | 95 |
| Kabelaansluiting van/tot mm² | | 1,5 | 1,5 | 1,5 | 2,5 | 2,5 | 2,5 |
| | | —4 | —4 | —4 | —6 | —6 | —6 |